

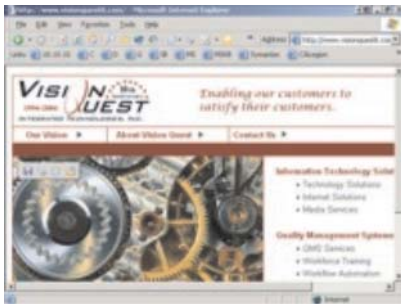
There is still a lot of confusion about the difference between monitor size and monitor resolution. Put simply, a monitor's size is the physical dimensions which the screen covers--for instance, a 15" monitor (the most common) actually has about 13.8 inches, from corner to corner, of viewable space. A 17" monitor usually has about 16 inches of viewable space.

Resolution, on the other hand, measures the amount of visual information which is fit onto that screen. Resolution is measured in lines of resolution both horizontally and vertically. A large monitor can be set to a lower resolution, resulting in pictures, browser windows, text, etc. being blown up to a larger size--but reducing how much information can be seen, and reducing detail giving a "pixelated" or distorted effect. A small monitor can usually be set to a higher resolution, which means you can fit more information on the screen, and it will be more detailed, but may be too small to be useful.

Monitors can be set to various resolutions. The change in resolution and the number of colors displayed is determined by your computers Video Card. The better your Video Card and the larger and higher quality the monitor, the higher the resolution can be set. Although some monitors can be set to as high as 1600x1200 pixels, about 90% of computer monitors are set to either 640x480, 800x600, or 1024x768 pixels.

Smaller monitors (14" and smaller, including many laptops) often are set to 640x480, although this is quickly falling out of practice as technology allows higher quality screens. 15" and 17" monitors, composing the bulk of computer screens, are generally set to 800x600 or 1024x768. Monitors 19" and larger only compose a small fraction of the market, but default to even higher resolutions.

To give you an idea of how these variances can effect website viewing, here are some sample pages set for web browsers at various resolutions. Please note that since the resolution numbers include the menus, borders, scroll bars, etc., the actual viewable area of the browser window is somewhat less than the actual resolution:



640X480



800X600



1024X768

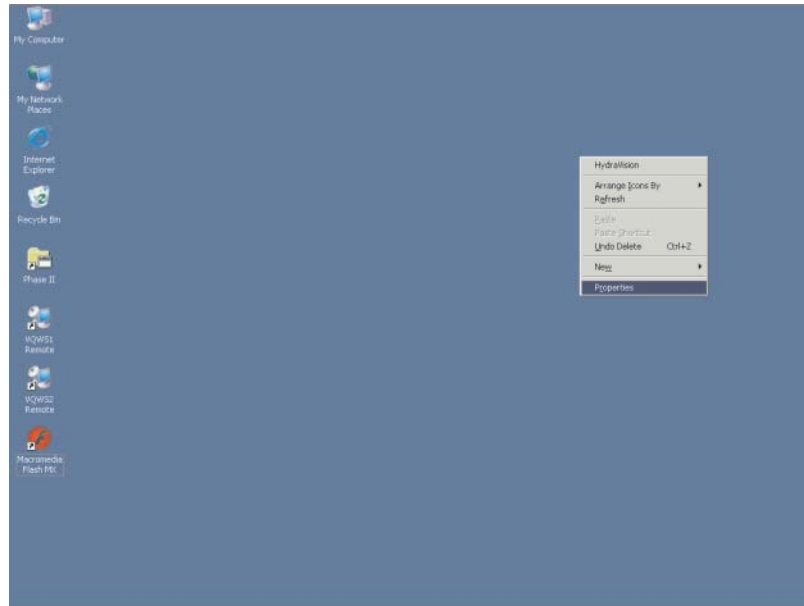
Currently the resolutions used by most web surfers approximately breaks down as:

Resolution	Appx. Usage	Typical User/Usage
640x480	2%	Older/smaller monitors, older laptop computers
800x600	48%	Most 15" desktop monitors, many small laptops
1024x768	41%	17" desktop monitors; a few 15" desktop monitors; 12"-14" laptops
1024x768	9%	Most larger desktop monitors and most 15"+ laptops

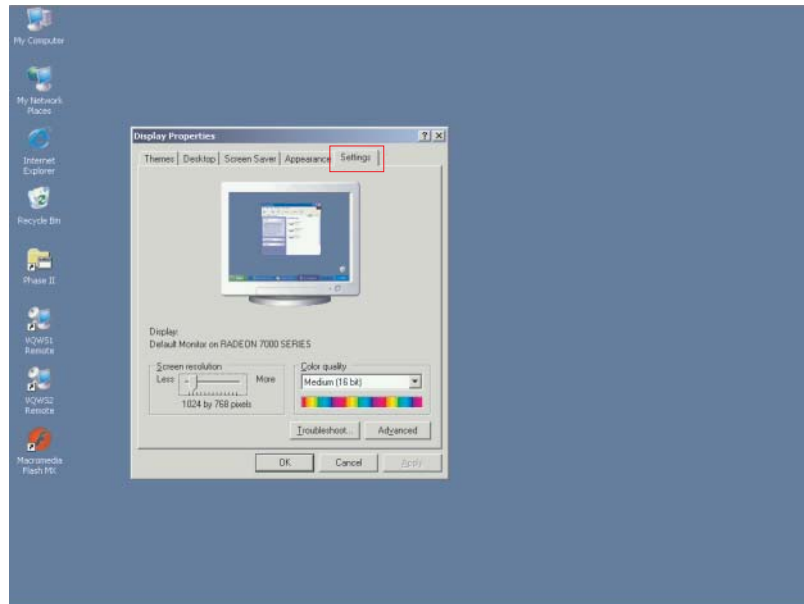
This is why most web sites are designed for 800x600 or 1024x768 resolution. Some sites are designed only for 1024x768 or higher, which means that the site is being cut off to over half of it's visitors! This leaves the 640x480 demographic. As monitor technology improves and prices continue to drop, fewer and fewer displays are being set to this low resolution.

**For additional information, contact a Vision Quest representative at (714) 573-4932.**

# HOW TO SET MONITOR RESOLUTION



**From the Windows Desktop right click and select Properties.**



**In the pop up dialogue choose the Setting Tab.**

**Adjust Resolution and Number of Colors to you preference.**